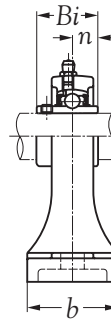
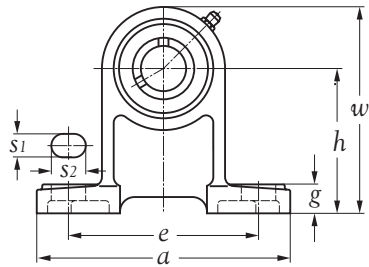


| Shaft dia.<br>mm<br>inch | Unit number | Nominal dimensions |          |         |         |                |                |        |         |        |        | Bolt size<br>mm<br>inch | Bearing number | Housing number | Mass of unit<br>Kg |
|--------------------------|-------------|--------------------|----------|---------|---------|----------------|----------------|--------|---------|--------|--------|-------------------------|----------------|----------------|--------------------|
|                          |             | h                  | a        | e       | b       | s <sub>1</sub> | s <sub>2</sub> | g      | w       | Bi     | n      |                         |                |                |                    |
| 12<br>1/2                | UCPH 201    | 70                 | 127      | 95      | 40      | 12             | 16             | 13     | 101     | 31.0   | 12.7   | M 10                    | UC 201         | PH 204         | 0.81               |
|                          | UCPH 201-8  | 2-3/4              | 5        | 3-47/64 | 1-37/64 | 15/32          | 5/8            | 3/64   | 3-31/32 | 1.2205 | 0.5000 | 3/8                     | UC 201-8       |                | 0.81               |
| 15<br>5/8                | UCPH 202    | 70                 | 127      | 95      | 40      | 12             | 16             | 13     | 101     | 31.0   | 12.7   | M 10                    | UC 202         | PH 204         | 0.80               |
|                          | UCPH 202-10 | 2-3/4              | 5        | 3-47/64 | 1-37/64 | 15/32          | 5/8            | 3/64   | 3-31/32 | 1.2205 | 0.5000 | 3/8                     | UC 202-10      |                | 0.80               |
| 17<br>11/16              | UCPH 203    | 70                 | 127      | 95      | 40      | 12             | 16             | 13     | 101     | 31.0   | 12.7   | M 10                    | UC 203         | PH 204         | 0.79               |
|                          | UCPH 203-11 | 2-3/4              | 5        | 3-47/64 | 1-37/64 | 15/32          | 5/8            | 3/64   | 3-31/32 | 1.2205 | 0.5000 | 3/8                     | UC 203-11      |                | 0.79               |
| 20<br>3/4                | UCPH 204    | 70                 | 127      | 95      | 40      | 12             | 16             | 13     | 101     | 31.0   | 12.7   | M 10                    | UC 204         | PH 204         | 0.77               |
|                          | UCPH 204-12 | 2-3/4              | 5        | 3-47/64 | 1-37/64 | 15/32          | 5/8            | 3/64   | 3-31/32 | 1.2205 | 0.5000 | 3/8                     | UC 204-12      |                | 0.78               |
| 25<br>1                  | UCPH 205    | 80                 | 140      | 105     | 50      | 13             | 19             | 16     | 114     | 34.1   | 14.3   | M 10                    | UC 205         | PH 205         | 1.01               |
|                          | UCPH 205-16 | 3-5/32             | 5-3/64   | 4-9/64  | 1-31/32 | 3/64           | 3/4            | 5/8    | 4-31/64 | 1.3425 | 0.5630 | 3/8                     | UC 205-16      |                | 1.00               |
| 30<br>1-1/8<br>1-1/4     | UCPH 206    | 90                 | 165      | 121     | 50      | 17             | 21             | 18     | 130     | 38.1   | 15.9   | M 14                    | UC 206         | PH 206         | 1.56               |
|                          | UCPH 206-18 | 3-35/64            | 6-1/2    | 4-49/64 | 1-31/32 | 43/64          | 53/64          | 45/64  | 5-1/8   | 1.5000 | 0.6260 | 1/2                     | UC 206-18      |                | 1.58               |
|                          | UCPH 206-20 |                    |          |         |         |                |                |        |         |        |        |                         | UC 206-20      |                | 1.54               |
| 35<br>1-1/4<br>1-3/8     | UCPH 207    | 95                 | 167      | 127     | 60      | 17             | 21             | 19     | 140     | 42.9   | 17.5   | M 14                    | UC 207         | PH 207         | 1.88               |
|                          | UCPH 207-20 | 3-47/64            | 6-37/64  | 5       | 2-23/64 | 43/64          | 53/64          | 3/4    | 5-3/64  | 1.6890 | 0.6890 | 1/2                     | UC 207-20      |                | 1.94               |
|                          | UCPH 207-22 |                    |          |         |         |                |                |        |         |        |        |                         | UC 207-22      |                | 1.89               |
| 40<br>1-1/2              | UCPH 208    | 100                | 184      | 137     | 66      | 17             | 21             | 20     | 150     | 49.2   | 19.0   | M 14                    | UC 208         | PH 208         | 2.44               |
|                          | UCPH 208-24 | 3-15/16            | 7-1/4    | 5-25/64 | 2-19/32 | 43/64          | 53/64          | 25/32  | 5-29/32 | 1.9370 | 0.7480 | 1/2                     | UC 208-24      |                | 2.48               |
| 45<br>1-5/8<br>1-3/4     | UCPH 209    | 105                | 190      | 146     | 70      | 17             | 21             | 20     | 158     | 49.2   | 19.0   | M 14                    | UC 209         | PH 209         | 2.72               |
|                          | UCPH 209-26 | 4-9/64             | 7-31/64  | 5-3/4   | 2-3/4   | 43/64          | 53/64          | 25/32  | 6-7/32  | 1.9370 | 0.7480 | 1/2                     | UC 209-26      |                | 2.82               |
|                          | UCPH 209-28 |                    |          |         |         |                |                |        |         |        |        |                         | UC 209-28      |                | 2.74               |
| 50<br>1-7/8              | UCPH 210    | 110                | 204      | 159     | 70      | 19             | 22             | 22     | 165     | 51.6   | 19.0   | M 16                    | UC 210         | PH 210         | 3.08               |
|                          | UCPH 210-30 | 4-21/64            | 8-1/64   | 6-17/64 | 2-3/4   | 3/4            | 55/64          | 55/64  | 6-1/2   | 2.0315 | 0.7480 | 5/8                     | UC 210-30      |                | 3.15               |
| 55<br>2                  | UCPH 211    | 120                | 217      | 171     | 75      | 19             | 22             | 23     | 181     | 55.6   | 22.2   | M 16                    | UC 211         | PH 211         | 4.05               |
|                          | UCPH 211-32 | 4-23/32            | 8-35/64  | 6-47/64 | 2-61/64 | 3/4            | 55/64          | 29/32  | 7-1/8   | 2.1890 | 0.8740 | 5/8                     | UC 211-32      |                | 4.20               |
| 60<br>2-1/4              | UCPH 212    | 130                | 236      | 186     | 80      | 19             | 22             | 24     | 197     | 65.1   | 25.4   | M 16                    | UC 212         | PH 212         | 4.78               |
|                          | UCPH 212-36 | 5-1/8              | 9-19/64  | 7-21/64 | 3-5/32  | 3/4            | 55/64          | 15/16  | 7-3/4   | 2.5630 | 1.0000 | 5/8                     | UC 212-36      |                | 4.92               |
| 65<br>2-1/2              | UCPH 213    | 140                | 258      | 203     | 85      | 23             | 28             | 26     | 213     | 65.1   | 25.4   | M 20                    | UC 213         | PH 213         | 5.93               |
|                          | UCPH 213-40 | 5-3/64             | 10-5/32  | 7-63/64 | 3-11/32 | 29/32          | 1-7/64         | 1-1/64 | 8-25/64 | 2.563  | 1.0000 | 3/4                     | UC 213-40      |                | 6.01               |
| 70<br>2-3/4              | UCPH 214    | 150                | 266      | 210     | 90      | 23             | 28             | 27     | 227     | 74.6   | 30.2   | M 20                    | UC 214         | PH 214         | 6.99               |
|                          | UCPH 214-44 | 5-29/32            | 10-15/32 | 8-17/64 | 3-35/64 | 29/32          | 1-7/64         | 1-1/16 | 8-15/16 | 2.9370 | 1.1890 | 3/4                     | UC 214-44      |                | 7.00               |

Remark: 1) Regular production in "J" tolerance.  
2) Bearing unit with grease holes and grease groove.  
3) Bearing unit without stop pin.



| Shaft<br>dia.<br>mm<br>inch | Unit<br>number | Nominal dimensions |          |         |         |                |                |        |         |        |        | Bolt<br>size<br>mm<br>inch | Bearing<br>number | Housing<br>number | Mass<br>of<br>unit<br>Kg |
|-----------------------------|----------------|--------------------|----------|---------|---------|----------------|----------------|--------|---------|--------|--------|----------------------------|-------------------|-------------------|--------------------------|
|                             |                | h                  | a        | e       | b       | s <sub>1</sub> | s <sub>2</sub> | g      | w       | Bi     | n      |                            |                   |                   |                          |
| 75<br>3                     | UCPH 215       | 160                | 274      | 217     | 95      | 23             | 28             | 28     | 240     | 77.8   | 33.3   | M 20                       | UC 215            | PH 215            | 7.84                     |
|                             | UCPH 215-48    | 6-19/64            | 10-25/32 | 8-35/64 | 3-47/64 | 29/32          | 1-7/64         | 1-7/64 | 9-29/64 | 3.0630 | 1.3110 | 3/4                        | UC 215-48         |                   | 7.76                     |
| 80<br>3-1/8                 | UCPH 216       | 170                | 290      | 232     | 100     | 24             | 28             | 30     | 256     | 82.6   | 33.3   | M 20                       | UC 216            | PH 216            | 9.13                     |
|                             | UCPH 216-50    | 6-11/16            | 11-27/64 | 9-9/64  | 3-15/16 | 15/16          | 1-7/64         | 1-3/16 | 10-5/64 | 3.252  | 1.3110 | 3/4                        | UC 216-50         |                   | 9.18                     |

- Remark: 1) Regular production in "J" tolerance.  
 2) Bearing unit with grease holes and grease groove.  
 3) Bearing unit without stop pin.